



# shiloh™

C A B I N E T R Y



*Elegance*  
in wood.



# Shiloh<sup>TM</sup>

C A B I N E T R Y

Cabinetry is a significant part of your home. More than just a practical item for storage, cabinets are a key centerpiece in the design of a home. Shiloh Cabinetry features a seemingly endless array of choices in styles and finishes, while offering many innovative accessories to make life simpler. Because we stay ahead of trends, you are sure to find the look that elevates your home to another level.

## CONTENTS

|          |                                |
|----------|--------------------------------|
| 2.....   | paint finishes                 |
| 4.....   | stain finishes                 |
| 7.....   | gallery                        |
| 18.....  | door styles                    |
| 22.....  | door overlay and inset options |
| 24.....  | specialty finishes             |
| 26.....  | decorative wood hoods          |
| 27.....  | furniture vanities             |
| IBC..... | construction                   |

### COVER

color  
wood species  
door style

EVERGREEN FOG  
MAPLE  
NEW HAVEN



color  
wood species  
door style

HARBOR  
AMERICAN POPLAR  
HARTFORD

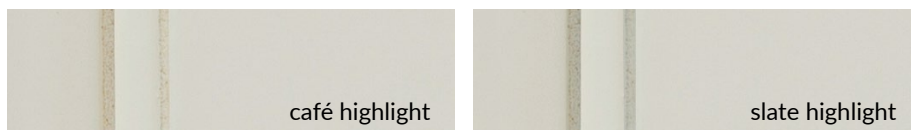
# PAINT

Color is everything, and painted finishes provide limitless possibilities, which is why Shiloh Cabinetry offers so many choices. Our diverse collection of standard paint colors is only the beginning. For those with a particular color in mind, our custom paint program lets you choose from the entire Sherwin Williams' palette of paint colors. Visit your local retailer for more details.



## HIGHLIGHT OPTIONS ON PAINT

Shiloh also offers an additional finish technique on paint. Available on select paint colors, our highlight option adds an extra level of character for a more antiqued appearance. Variation of intensity is common and expected with highlight techniques.





color  
wood species  
door style

POLAR & NATURAL  
MAPLE & WALNUT  
SQUARE FLAT

# STAIN

The beauty of wood is showcased with our carefully selected palette of stains. Our staining process enhances the various wood species that we offer, resulting in a beautifully finished piece of furniture for your home. When you add a glaze or highlight to one of our stains, you add an extra layer of depth and a change to the color tone, for even more possibilities. From traditional colors to modern interpretations, you are sure to find the right finish.

## Maple



## Alder



## Cherry



## Walnut



## Red Oak



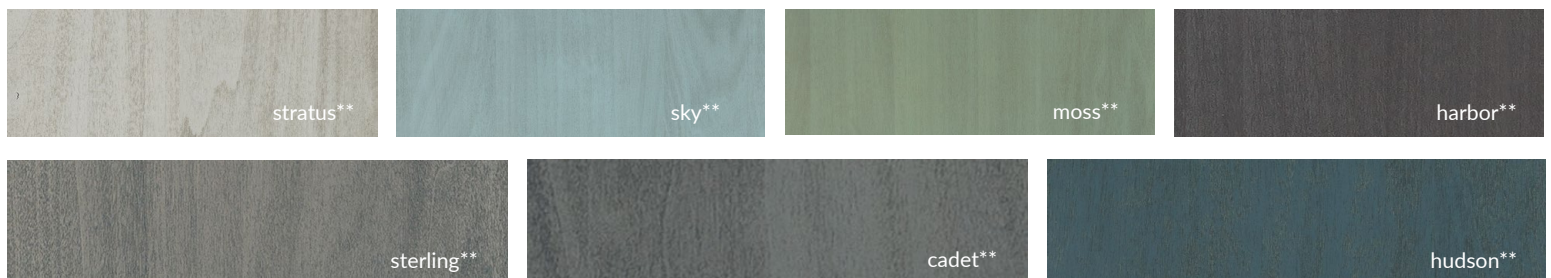
## Hickory



## Select Poplar



## American Poplar



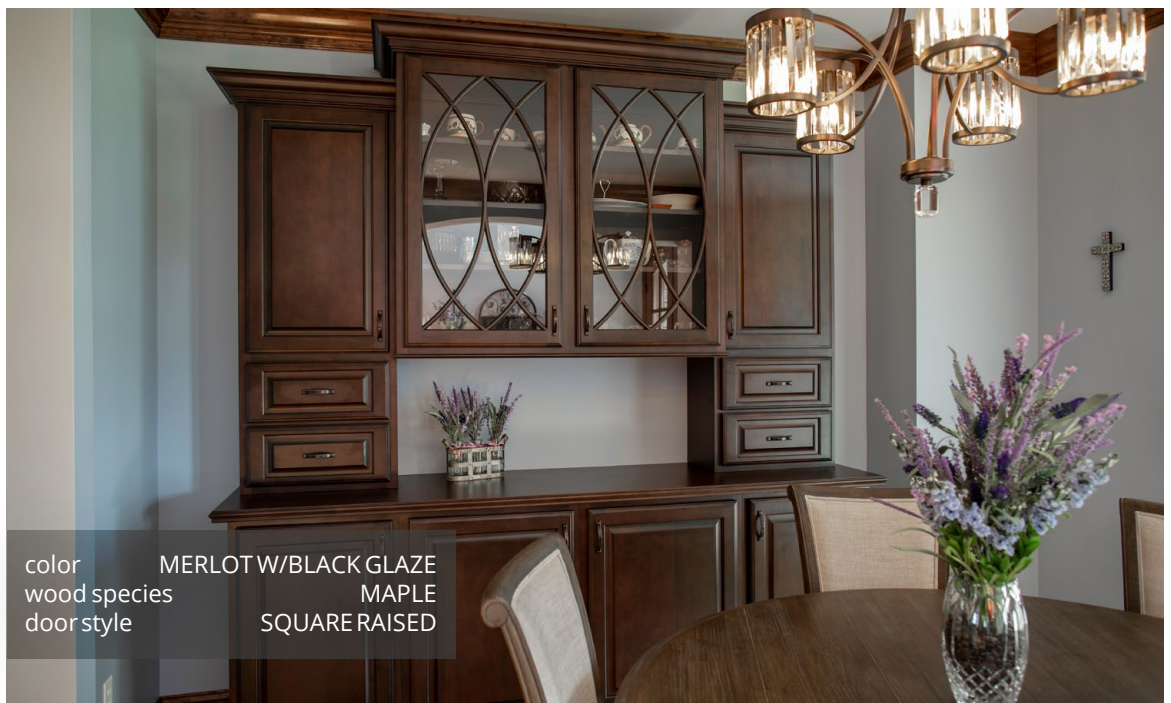
# STAIN

## White Oak, Rift Cut White Oak & Quarter-Sawn White Oak



### GLAZE AND HIGHLIGHT OPTIONS ON STAIN

By choosing a glaze or highlight, you add even more character to the finish. With several options of glaze or a subtle highlight, our hand-wiped process adds a layer of color that changes the underlying stain for a deeper, richer appearance. As this is a hand-applied technique, variation in the amount and location of glaze material will vary from piece to piece and within the same piece. Variation adds to the character and should be expected.







color  
wood species  
door style

FLAGSTONE (AGED)  
QUARTER -SAWN WHITE OAK  
GREENSBORO



color CUSTOM PAINT SW7615  
wood species MAPLE  
door style METROPOLITAN (MDF)



color POLAR & NATURAL  
wood species MAPLE & WALNUT  
door style SQUARE FLAT



color  
wood species  
door style

SOFT WHITE  
MAPLE  
SAVANNAH



color  
wood species  
door style

POLAR & NATURAL  
MAPLE & QUARTER SAWN WHITE OAK  
HANOVER



color  
wood  
door style

SKY  
AMERICAN POPLAR  
SQUARE FLAT



color  
wood species  
door style

EVERGREEN FOG  
MAPLE  
NEW HAVEN



color  
wood species  
door style

POLAR W/SLATE H. L.  
& IRON ORE  
MAPLE  
HARTFORD



color  
wood species  
door style

ALMOND & ARCTIC  
RIFT CUT WHITE OAK & MAPLE  
HANOVER



color  
wood species  
door style

POLAR W/SLATE H.L. & CADET  
MAPLE & AMERICAN POPLAR  
SQUARE RAISED



color  
wood species  
door style

COTTON & NATURAL  
ALDER & QUARTER SAWN WHITE OAK  
HANOVER



color  
wood species  
door style

REPOSE GRAY & CLAY  
MAPLE & QUARTER SAWN WHITE OAK  
ESSEX





color  
wood species  
door style

ARCTIC  
MAPLE  
ASPEN



color WHITE SANDS & AQUA  
wood species ALDER  
door style STATESVILLE



color ARCTIC  
wood species MAPLE  
door style SQUARE FLAT



color  
wood species  
door style

ARCTIC & NAVAL  
MAPLE  
HANOVER

# DOOR STYLES



**Asherville**  
natural  
walnut



**Aspen**  
cashmere w/mocha glaze  
maple



**Beaded Century**  
autumn w/black glaze  
red oak



**Bradford**  
beige w/slate highlight  
maple



**Bristol**  
stratus  
american poplar



**Charleston**  
white sands (aged)  
alder



**Dalton**  
sterling  
american poplar



**Essex**  
dovetail gray  
maple



**Glenbrook**  
clary sage (olde world)  
maple



**Greensboro**  
arctic w/café highlight  
maple



**Hamlin**  
iron ore  
maple



**Hanover**  
flagstone  
rift cut white oak



Hartford  
carbon  
select poplar



Heritage  
walnut w/black glaze  
rustic alder



Kendall  
bourbon  
cherry



Lancaster  
cotton  
alder



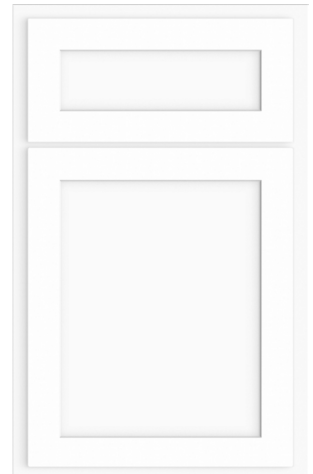
Landes  
silas w/graphite highlight  
alder



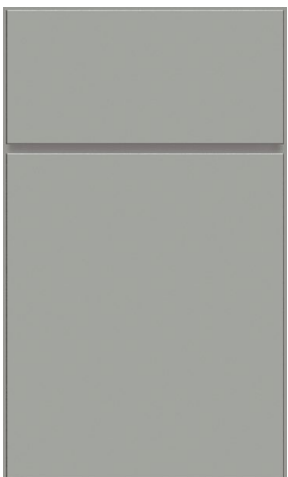
Manchester  
spice w/black glaze  
maple



Malibu  
whitewash  
rift cut white oak



Malibu-M1  
Arctic  
1 Piece MDF



Metropolitan  
unusual gray  
maple



Montgomery  
cayenne  
maple



Napa  
hudson  
maple



Napa-M1  
Evergreen Fog  
1 Piece MDF

# DOOR STYLES



**New Haven**  
braun  
quarter sawn white oak



**Oxford**  
beige (olde world)  
maple



**Oxford w/Sculpted DF**  
bourbon w/van dyke glaze  
cherry



**Portland**  
natural w/mocha glaze  
rustic alder



**Richmond**  
polar w/slate highlight  
maple



**Savannah**  
seagull  
select poplar



**Shelby**  
eggshell w/slate highlight  
maple



**Scottsdale**  
Whitewash  
White Oak



**Scottsdale-M1**  
Slate Tile  
1 Piece MDF



**Somerset**  
moss  
red oak



**Square Flat**  
harbor  
red oak



**Square Raised**  
sky  
american poplar



Statesville  
clay  
red oak



Summit  
spice w/black glaze  
maple



Ward  
naval  
maple



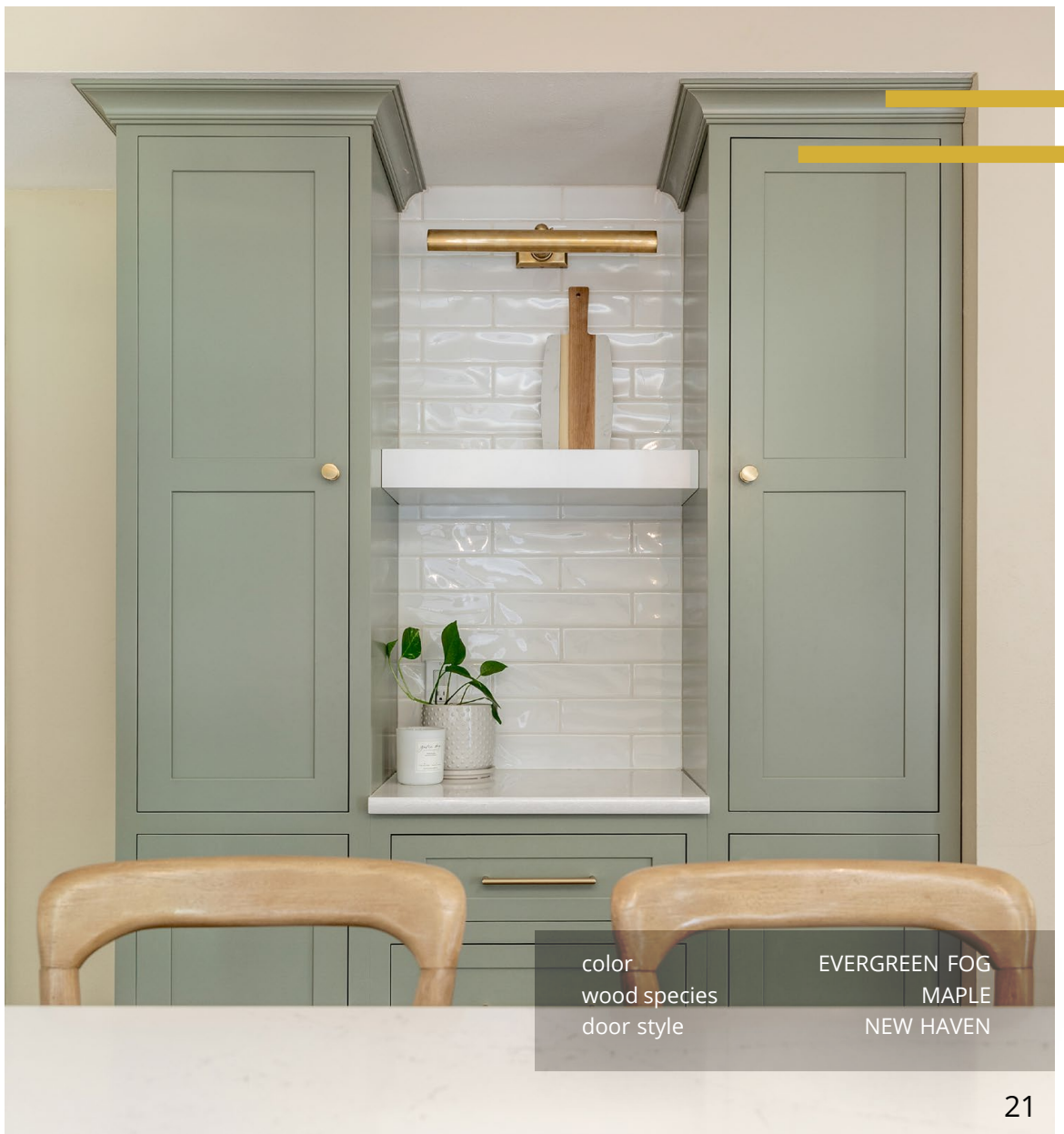
Wilmington  
heatherstone  
select poplar



Wilmington w/Slab DF  
dusk  
red oak



Windsor  
coffee w/black glaze  
cherry



color  
wood species  
door style

EVERGREEN FOG  
MAPLE  
NEW HAVEN

## DOOR OVERLAY & INSET OPTIONS

Shiloh Cabinetry offers the ultimate in flexibility with five types of framed cabinetry to combine with our great collection of door styles and finishes. With most Shiloh door styles available in any of the overlay or inset options below, just select your favorite door and finish and combine it with an overlay or inset cabinet style. Whether your kitchen design style suits overlay or inset, Shiloh has you covered.

Standard Overlay

Full Overlay

3/8" Inset

Flush Inset

Beaded Inset



### VISIT US ONLINE

Visit us at [shilohcabinetry.com](http://shilohcabinetry.com) to view our complete photo gallery featuring Shiloh cabinetry. You can also explore our large selection of finishes, learn about the construction of our cabinets, and find out where to buy Shiloh. All of this and more is just a click away.





color  
wood species  
door style

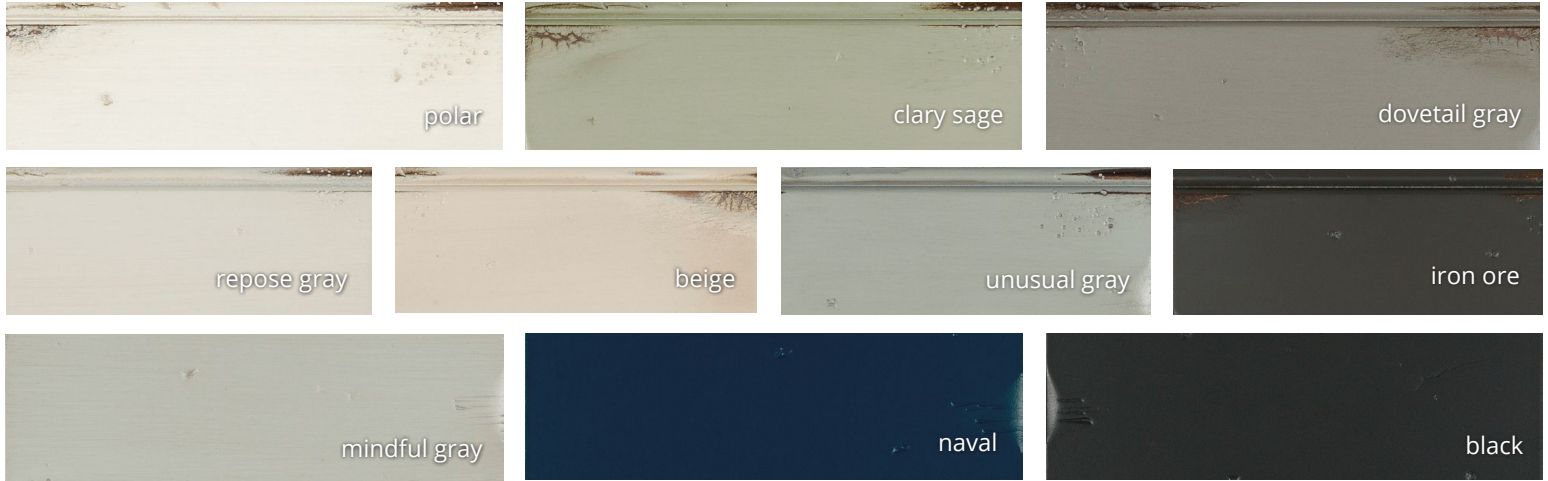
MOSS & COTTON  
AMERICAN POPLAR & ALDER  
HANOVER

# SPECIALTY FINISHES

## OLDEWORLD

Olde World is a painted finish, hand-distressed to simulate an aged and heavily worn appearance. The Olde World finish features a random combination of some, or all of, the following finish techniques: Worm holes, crackle, edge and panel gouging, rock dents, wearing, brushed highlight and more. Olde World is available on a select number of standard paint colors and on most wood species.

## FINISHES



## OLDE WORLD FINISH TECHNIQUES



## AGED

The Aged Technique is a predetermined selection of numerous finish techniques to create a worn and aged appearance. The techniques possible are: worm holing, edge and panel gouging, wearing, and rock dents. The level of "Aging" is very random and inconsistent from piece to piece. The Aged Technique can be applied to all wood species (excludes Select Poplar) on any stain or paint color, but is not compatible with Olde World finishes.

### AGED FINISH TECHNIQUES



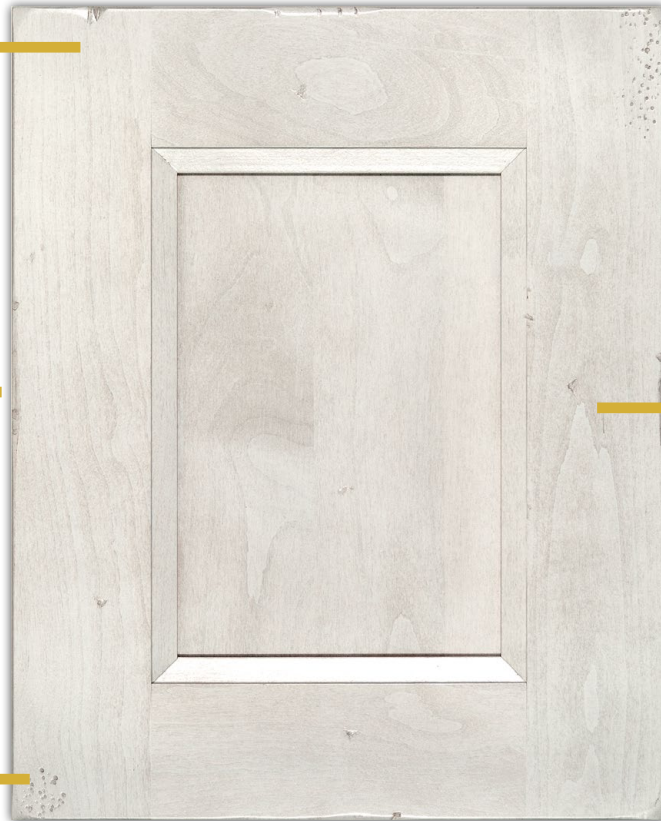
edge gouging



panel gouging



worm holing



worm holing



rock dents



wearing



color

wood species

door style

features

POLAR W/CAFÉ H.L. &  
CASHMERE W/MOCHA GLAZE  
MAPLE  
HERITAGE  
AGED TECHNIQUE & SAND - THROUGH

# DECORATIVE WOOD HOODS

Range Hood 48

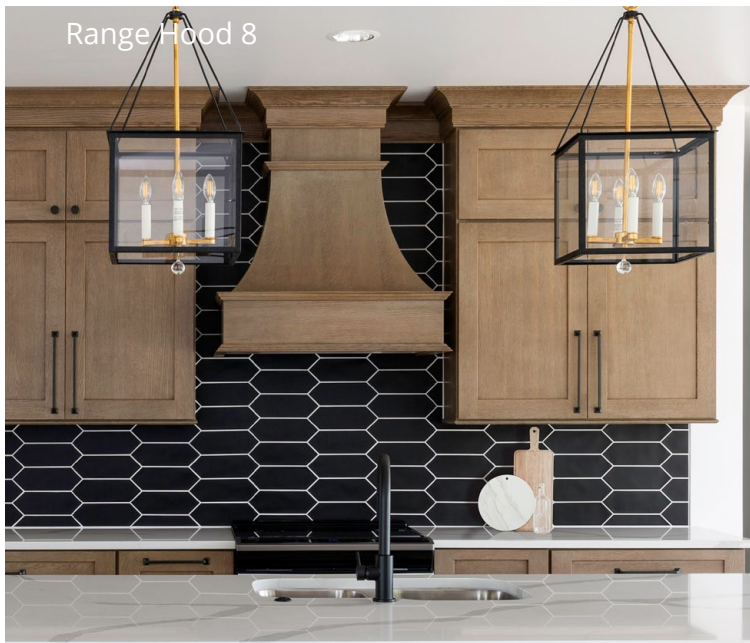


As the centerpiece of most kitchens, the range hood should be functional and beautiful. Shiloh has one of the most extensive wood hood offerings in the industry. With more than 40 unique styles, flexible sizing and all of Shiloh's finish options, our hoods make a statement in any kitchen. Our hoods are built by our own craftsmen and have been carefully engineered for appeal, functionality, and ease of installation.

Range Hood 36



Range Hood 8



Range Hood 57



# FURNITURE VANITIES

Shiloh's furniture vanities feature custom styling and access to our wide array of finishes. Each style features a specific construction method and is built by one of our expert craftsmen. Choose from a multitude of unique styles in single or double bowl configurations. With multiple sizes, door styles and finishes available, our furniture vanities are a simple way to customize a bathroom.



Vanity Tall Custom 12



Vanity Tall Custom 5



Vanity Tall Custom 3



Vanity Tall Custom 28

# KITCHEN CABINET COMPANIES AREN'T ALL THE SAME. MAKE SURE YOU PICK ONE THAT HAS A POSITIVE IMPACT ON THE ENVIRONMENT.

A recent study by Hanley-Wood found that environmental sustainability is one of the top reasons cited when selecting cabinets



KITCHEN CABINET MANUFACTURERS ASSOCIATION,  
ENVIRONMENTAL STEWARDSHIP PROGRAM (ESPI).  
ALL PRODUCTS IMPACT THE ENVIRONMENT  
FOR ESP PROGRAM CRITERIA. VISIT KCMA.ORG

## RESPONSIBLE PROCESS RESOURCE MANAGEMENT:

Cabinet manufacturers are checked to ensure they are dealing with wastes in responsible, sustainable ways and that they have a comprehensive recycling program in place.



## ENVIRONMENTAL STEWARDSHIP:

Cabinet manufacturers are checked to ensure they have a written policy stating their commitment to environmental quality and that they attempt to ensure their vendors also engage in environmentally sustainable practices.



## COMMUNITY ENGAGEMENT:

Cabinet manufacturers are examined to ensure they demonstrate community involvement and observe all federal, state and local environmental regulations.

To earn the KCMA Environmental Stewardship Program Certification Seal, companies need to score 80 out of a possible 110 points in these categories:

## SUSTAINABLE PRODUCT RESOURCE MANAGEMENT:

Cabinet manufacturers are investigated to ensure they are purchasing materials from reputable companies with sustainable forestry programs.



## AIR QUALITY:

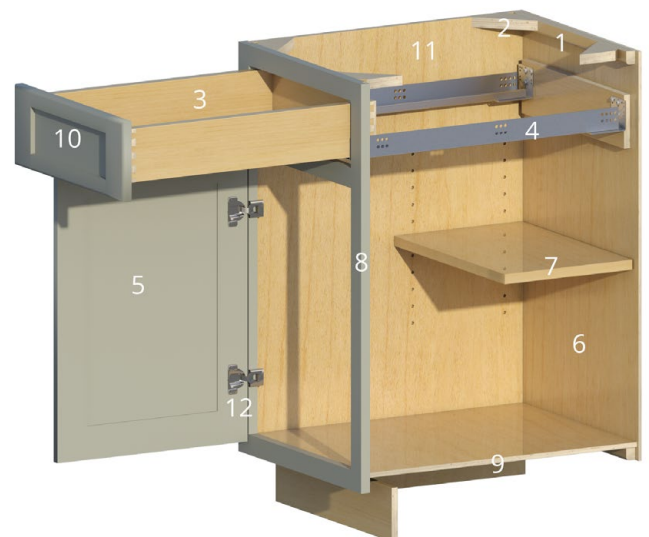
Cabinets are inspected to ensure they meet safe emission standards for formaldehyde and other hazardous air pollutant levels.



For more information, visit [www.kcma.org](http://www.kcma.org).

Shiloh Cabinetry's construction is an example of the commitment to long-term durability. Our cabinets feature quality components and construction methods throughout. We even operate our own testing lab to check the integrity of the finished products used to build our cabinets. Compare our cabinet construction against the competition and you will see why Shiloh stands out against the rest.

1. Solid wood hanging rail for secure fastening to the wall
2. Solid wood corner blocks in base cabinets add strength and stability
3. 5/8" hardwood dovetail drawer standard (3/4" hardwood dovetail available)
4. Guides are Blum TANDEM edge 7/8" extension with integrated BLUMOTION soft closing mechanism (optional Blum TANDEM full extension guides with integrated BLUMOTION soft closing mechanism)
5. Solid wood door (except painted finishes and Metropolitan door style)
6. Durable and easy to clean material
7. 3/4" plywood adjustable shelving with solid metal shelf clips
8. 1 1/2" wide solid wood frames
9. 3/8" plywood bottom and top (on wall cabinets)
10. Catalyzed conversion varnish topcoat that is smooth, very durable, and resistant to most household chemicals
11. 1/2" plywood sides with 1/4" wood veneer (stained) or 1/4" MDF (painted) applied on finished ends
12. Blum CLIP top BLUmotion, 6-way adjustable, soft-close, concealed hinges in standard or full overlay and flush or beaded inset (3/8" partial inset uses knife hinge that does not soft-close)



Construction and product specifications subject to change without notice and may vary from the information shown above.

Pictured on Back: Polar on Maple and Natural on Quarter Sawn White Oak using Hanover Door

# shiloh™

C A B I N E T R Y

shilohcabinetry.com



Kitchen Cabinet Manufacturers Assoc.  
Environmental Stewardship Program  
All Products Impact the Environment  
For ESP Program Criteria, Visit [kcmac.org](http://kcmac.org)

Manufactured by W. W. Wood Products, Inc.  
A family-owned company

Due to limitations in printing or changes in manufacturing, the finishes, products, and/or specifications shown may not be accurately represented or may no longer be available. Visit a retailer to view samples and confirm availability.



LIT-SFLB 2/24