

# *shiloh*<sup>TM</sup>

C A B I N E T R Y



FINISHES - INSPIRATION - CONSTRUCTION



Cabinetry is a significant part of your home. More than just a practical item for storage, cabinets are a key centerpiece in the design of a home. Shiloh Cabinetry features a seemingly endless array of choices in styles and finishes, while offering many innovative accessories to make life simpler. Because we stay ahead of trends, you are sure to find the look that elevates your home to another level.

## Contents

2.....	Paint Finishes
4.....	Stain Finishes
7.....	Gallery
18.....	Door Styles
22.....	Door Overlay & Inset Options
24.....	Specialty Finishes
26.....	Decorative Wood Hoods
27.....	Furniture Vanities
29.....	Construction



SQUARE RAISED PANEL  
ARCTIC & STRATUS  
MAPLE & AMERICAN POPLAR

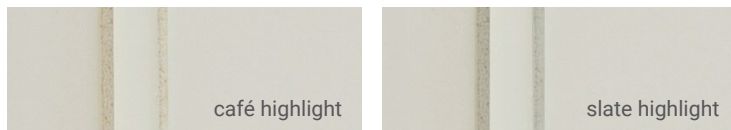
# Paint Finishes

Color is everything, and painted finishes provide limitless possibilities, which is why Shiloh Cabinetry offers so many choices. Our diverse collection of standard paint colors is only the beginning. For those with a particular color in mind, our custom paint program lets you choose from the entire Sherwin Williams' palette of paint colors. Visit your local retailer for more details.



## Highlight Options on Paint

Shiloh also offers an additional finish technique on paint. Available on select paint colors, our highlight option adds an extra level of character for a more antiqued appearance. Variation of intensity is common and expected with highlight techniques.



\* 2024 TREND COLORS



# Stain Finishes

The beauty of wood is showcased with our carefully selected palette of stains. Our staining process enhances the various wood species that we offer, resulting in a beautifully finished piece of furniture for your home. When you add a glaze or highlight to one of our stains, you add an extra layer of depth and a change to the color tone, for even more possibilities. From traditional colors to modern interpretations, you are sure to find the right finish.

## Maple



## Alder



## Walnut



\* REQUIRES A GLAZE OR HIGHLIGHT  
 \*\* NOT AVAILABLE WITH GLAZE OR HIGHLIGHT

## Cherry



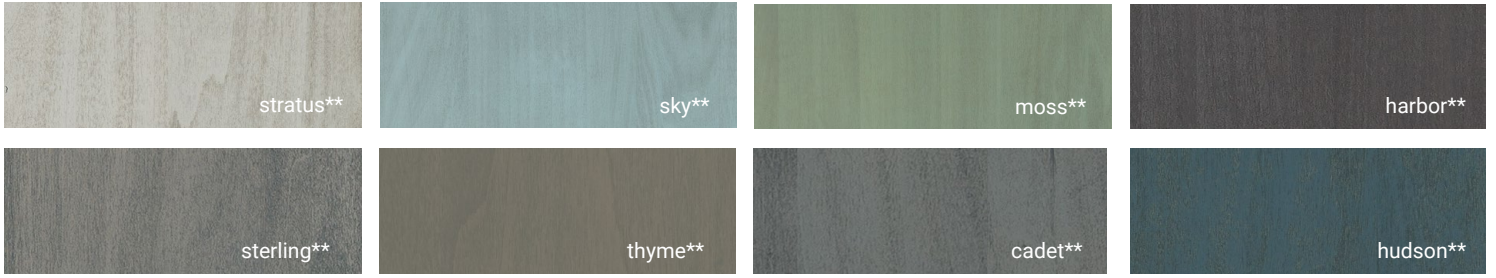
## Red Oak



## Hickory



## American Poplar



## Select Poplar



## White Oak, Rift Cut White Oak & Quarter-Sawn White Oak



\* REQUIRES A GLAZE OR HIGHLIGHT  
 \*\* NOT AVAILABLE WITH GLAZE OR HIGHLIGHT





GREENSBORO  
FLAGSTONE-AGED  
QUARTER-SAWN WHITE OAK



HANOVER  
BLACK  
MAPLE



SQUARE FLAT PANEL  
POLAR & NATURAL  
MAPLE & WALNUT



SAVANNAH  
SOFT WHITE  
MAPLE

HANOVER  
MOSS & COTTON  
AMERICAN POPLAR & ALDER





SQUARE FLAT PANEL  
SKY  
AMERICAN POPLAR



HANOVER  
POLAR & NATURAL  
MAPLE & QUARTER- SAWN WHITE OAK



HARTFORD  
POLAR W/SLATE H.L. & IRON ORE  
MAPLE



HANOVER  
ALMOND & ARCTIC  
MAPLE & RIFT-CUT WHITE OAK



SQUARE RAISED PANEL  
POLAR W/SLATE H.L. & CADET  
MAPLE & AMERICAN POPLAR





ASPEN  
ARCTIC  
MAPLE





ESSEX  
REPOSE GRAY & CLAY  
MAPLE & QUARTER-SAWN WHITE OAK



SQUARE FLAT PANEL  
ARCTIC  
MAPLE



HANOVER  
ARCTIC & NAVAL  
MAPLE

# Door Styles



Asherville  
natural  
walnut



Aspen  
cashmere w/mocha glaze  
maple



Beaded Century  
autumn w/black glaze  
red oak



Bradford  
beige w/slate highlight  
maple



Bristol  
stratus  
american poplar



Charleston  
white sands (aged)  
rustic alder



Concord  
thyme  
maple



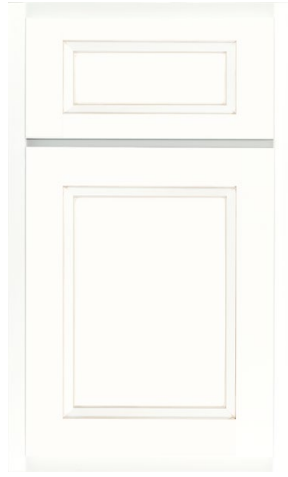
Dalton  
sterling  
american poplar



Essex  
dovetail gray  
maple



Glenbrook  
clary sage (olde world)  
maple



Greensboro  
arctic w/café highlight  
maple



Hamlin  
iron ore  
maple



Hanover  
flagstone  
rift-cut white oak



Hartford  
carbon  
select poplar



Heritage  
walnut  
rustic alder



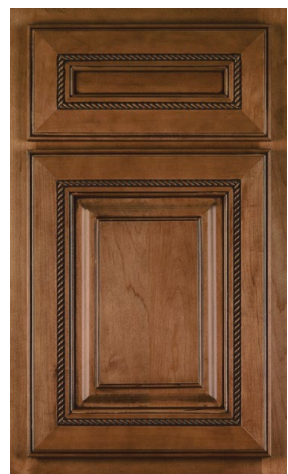
Kendall  
bourbon  
cherry



Lancaster  
cotton  
alder



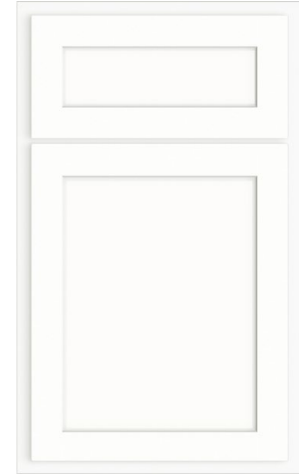
Landes  
silas w/graphite highlight  
alder



Manchester  
spice w/black glaze  
maple



Malibu  
straw  
rift cut white oak



Malibu-M1  
arctic  
1 piece mdf

# Door Styles



Metropolitan  
unusual gray  
maple



Montgomery  
cayenne  
maple



Napa  
hudson  
maple



Napa-M1  
evergreen fog  
1 piece mdf



New Haven  
braun  
quarter sawn white oak



Oxford  
beige (olde world)  
maple



Oxford w/Sculpted DF  
bourbon w/van dyke glaze  
cherry



Portland  
natural w/mocha glaze  
rustic alder



Reeded Malibu  
pure white  
maple



Richmond  
polar w/slate highlight  
maple



Savannah  
seagull  
select poplar



Shelby  
eggshell w/slate highlight  
maple



Scottsdale  
whitewash  
white oak



Scottsdale-M1  
slate Tile  
1 piece mdf



Somerset  
moss  
red oak



Square Flat  
harbor  
red oak



Square Raised  
sky  
american poplar



Statesville  
clay  
red oak



Summit  
spice w/black glaze  
maple



Tahoe  
sterling  
american poplar



Ward  
naval  
maple



Wilmington  
heatherstone  
select poplar



Wilmington w/Slab DF  
dusk  
red oak



Windsor  
coffee w/black glaze  
cherry

# Door Overlay & Inset Options

Shiloh Cabinetry offers the ultimate in flexibility with nine types of framed cabinetry to combine with our great collection of door styles and finishes. With most Shiloh door styles available in any of the overlay or inset options below, just select your favorite door and finish and combine it with an overlay or inset cabinet style. Whether your kitchen design style suits overlay or inset, Shiloh has you covered.

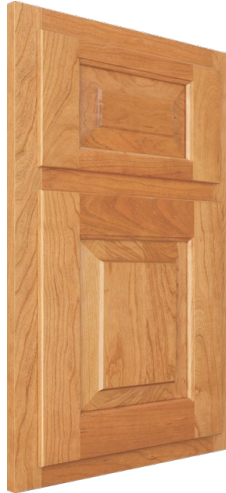
Standard Overlay



Full Overlay



3/8" Inset



Beaded Inset



Square Beaded Inset



Modern Flush Inset



Flush Inset



Modern Beaded Inset



Modern Square Beaded Inset



## Visit Us Online

Visit us at [shilohcabinetry.com](http://shilohcabinetry.com) to view our complete photo gallery featuring Shiloh cabinetry. You can also explore our large selection of finishes, learn about the construction of our cabinets, and find out where to buy Shiloh. All of this and more is just a click away. Scan the QR code with your smartphone camera to go directly to [shilohcabinetry.com](http://shilohcabinetry.com)







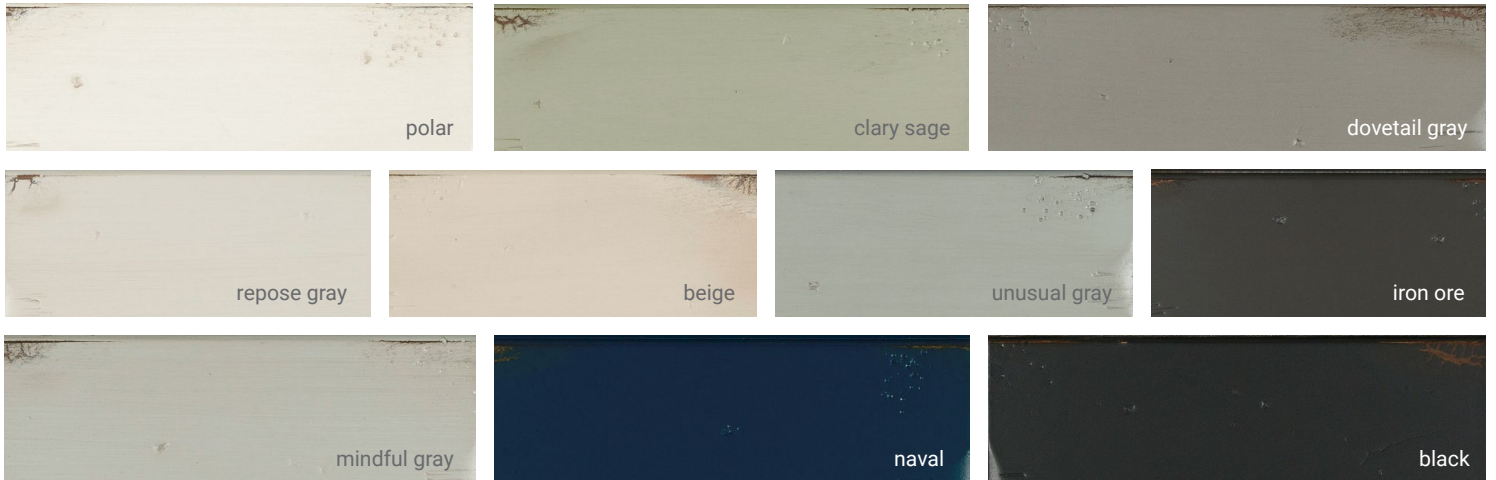
NEW HAVEN  
MODERN FLUSH INSET  
EVERGREEN FOG  
MAPLE

# Specialty Finishes

## Olde World

Olde World is a painted finish, hand-distressed to simulate an old and heavily worn appearance. The Olde World finish features a random combination of some, or all of, the following finish techniques: rock dents, crackle, wearing, edge and panel gouging, brushed highlight, worm holing and more. Olde World is available on a select number of standard paint colors and on most wood species.

## Finishes



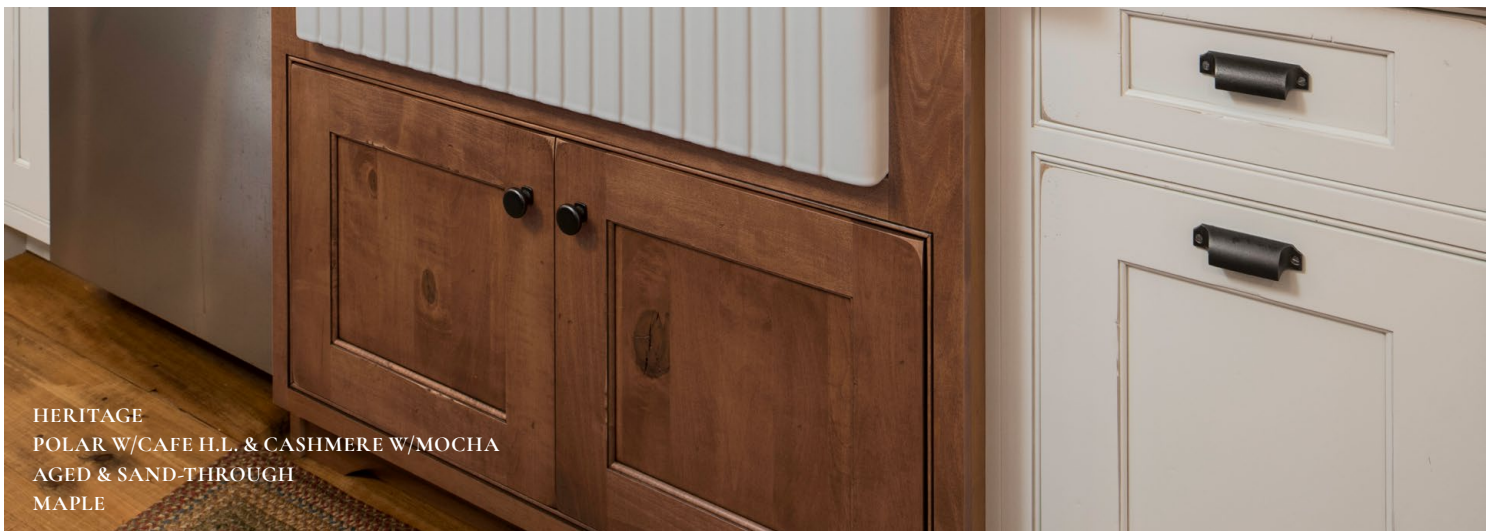
## Olde World Finish Techniques



# Aged

The Aged Technique is a predetermined selection of numerous finish techniques to create a worn and aged appearance. The techniques possible are: edge and panel gouging, worm holing, rock dents, and wearing. The level of "Aging" is very random and inconsistent from piece to piece. The Aged Technique can be applied to all wood species (excludes Select Poplar) on any stain or paint color, but is not compatible with Olde World finishes.

## Aged Finish Techniques



# Decorative Wood Hoods

As the centerpiece of most kitchens, the range hood should be functional and beautiful. Shiloh has one of the most extensive wood hood offerings in the industry. With more than 40 unique styles, flexible sizing and all of Shiloh's finish options, our hoods make a statement in any kitchen. Our hoods are built by our own craftsmen and have been carefully engineered for appeal, functionality, and ease of installation.



# Furniture Vanities



Vanity Tall Custom 3

Shiloh's furniture vanities feature custom styling and access to our wide array of finishes. Each style features a specific construction method and is built by one of our expert craftsmen. Choose from a multitude of unique styles in single or double bowl configurations. With multiple sizes, door styles and finishes available, our furniture vanities are a simple way to customize a bathroom.



Vanity Tall Custom 5



Vanity Tall Custom 12



Vanity Tall Custom 27

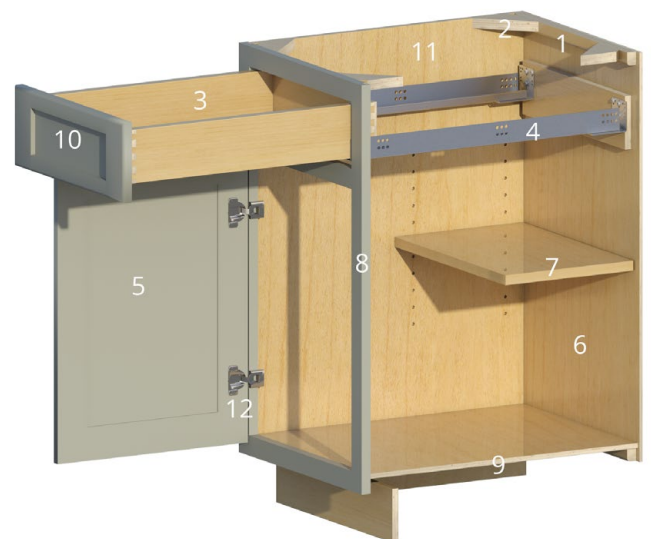


SQUARE FLAT PANEL  
POLAR & NATURAL  
MAPLE & WALNUT

# Shiloh Construction

Shiloh Cabinetry's construction is an example of the commitment to long-term durability. Our cabinets feature quality components and construction methods throughout. We even operate our own testing lab to check the integrity of the finished products used to build our cabinets. Compare our cabinet construction against the competition and you will see why Shiloh stands out against the rest.

1. Solid wood hanging rail for secure fastening to the wall
2. Solid wood corner blocks in base cabinets add strength and stability
3. 5/8" hardwood dovetail drawer standard (3/4" hardwood dovetail available)
4. Guides are Blum TANDEM edge 7/8" extension with integrated BLUMOTION soft closing mechanism (optional Blum TANDEM full extension guides with integrated BLUMOTION soft closing mechanism)
5. Solid wood door (except painted finishes and Metropolitan door style)
6. Durable and easy to clean material
7. 3/4" plywood adjustable shelving with solid metal shelf clips
8. 1 1/2" wide solid wood frames
9. 3/8" plywood bottom and top (on wall cabinets)
10. Catalyzed conversion varnish topcoat that is smooth, very durable, and resistant to most household chemicals
11. 1/2" plywood sides with 1/4" wood veneer (stained) or 1/4" MDF (painted) applied on finished ends
12. Blum CLIP top BLUMOTION, 6-way adjustable, soft-close, concealed hinges in standard or full overlay and flush or beaded inset (includes modern inset versions). 3/8" inset uses knife hinge that does not soft-close



Construction and product specifications subject to change without notice and may vary from the information shown above.

Pictured on Back: White Sands on Alder using Statesville Door

# shiloh™

C A B I N E T R Y

shilohcabinetry.com



Kitchen Cabinet Manufacturers Assoc.  
Environmental Stewardship Program  
All Products Impact the Environment  
For ESP Program Criteria, Visit [kcmas.org](http://kcmas.org)

MANUFACTURED BY W. W. WOOD PRODUCTS, INC.  
A FAMILY-OWNED COMPANY

Due to limitations in printing or changes in manufacturing, the finishes, products, and/or specifications shown may not be accurately represented or may no longer be available. Visit a retailer to view samples and confirm availability.



LIT-SFLB 5/24